

ALL QUOTATIONS SUBJECT TO CHANGE WITHOUT NOTICE. ALL AGREEMENTS ARE CONTINGENT UPON STRIKES, ACCIDENTS AND OTHER DELAYS UNAVOIDABLE OR BEYOND OUR CONTROL.

JAMES KILBOURNE, PRES. & GEN'L. MGR.
FELIX A. JACOBS, 1st Vice-Prest.

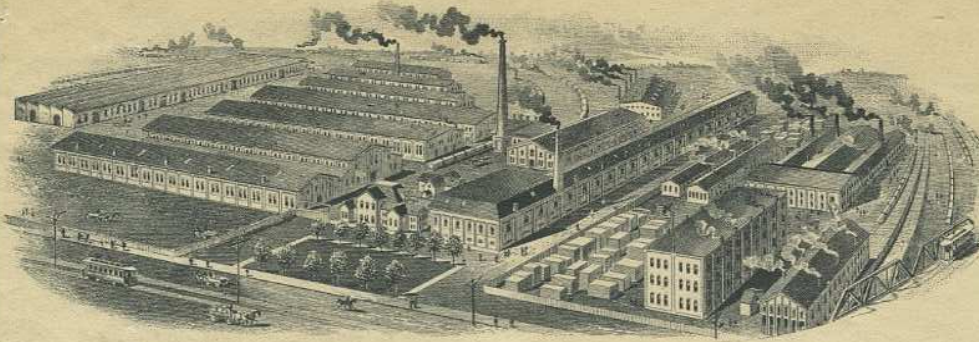
J. R. KILBOURNE, 2nd Vice Prest & Asst Gen'l. Manager.
F. W. HUBBARD, SECRETARY.

F. C. EATON, TREASURER.
JOS. D. POTTER, AUDITOR.

THE KILBOURNE & JACOBS MFG. CO.

INCORPORATED

WHEEL SCRAPERS,
DRAG SCRAPERS,
CONTRACTORS,
DUMP CARS AND CARTS,
GRADING PLOWS,
WHEELBARROWS
OF ALL KINDS.
STEEL
ORE AND MINE CARS,
AND TUBULAR
WHEELBARROWS,
SMALL CARS
OF EVERY KIND.



RAILROAD AND WAREHOUSE
TRUCKS,
BAGGAGE BARROWS,
SUGAR CANE CARS,
PLANTATION CARS,
NARROW GAUGE
RAILROAD CARS,
STEEL TROUGHES
AND STEEL SHAPES
OF VARIOUS KINDS,
WROUGHT STEEL SINKS,
STEEL SHOP PANS
AND
STEEL BARRELS.

CABLE ADDRESS:
"KILBOURNE COLUMBUS"
CODES USED:
OUR CIPHER NO. 9,
A B C CODE 4TH EDITION,
DIRECTORY CODE,
A-1 CODE
WESTERN UNION TELEGRAPHIC CODE
LIEBER'S CODE

LOCAL & LONG DISTANCE TELEPHONES
WITH PRIVATE BRANCH EXCHANGES

GENERAL OFFICES AT WORKS
CORNER LINCOLN AND FOURTH STREETS,
COLUMBUS, OHIO.

NEW YORK CITY OFFICE,
25 BROAD STREET,
BRANCH OFFICES:
LONDON,
SYDNEY,
BUENOS AIRES,
SANTIAGO.

CONNECTIONS IN ALL PARTS OF THE WORLD.

Columbus, O., U.S.A.

Nov. 25th, 1911.

IN ANSWERING THIS LETTER
PLEASE REFER TO DEPT.

TRAFFIC.

Mr. G. C. Van Zandt, Agt.,
Norfolk & Western Ry. Co.,
Columbus, Ohio.

Dear Sir:-

We are returning herewith Pro 1120,
covering shipment of castings from American Car & Fdry
Co., Huntington, W. Va. We note from enclosed bill
that you have made a refund of 30¢ on this shipment,
it being for an overcharge on your part. As we de-
ducted this amount from their invoice, and also for-
warded to them the original Ex. bill, we would ask
that you kindly forward enclosed bill to the said firm
and refund to them the 30¢.

Thanking you in advance, we remain,

Yours truly,

BAW/RS.

Enc.*

THE KILBOURNE & JACOBS MFG. CO.

JAMES KILBOURNE, PRES. & GEN'L. MANAGER.
FELIX A. JACOBS, 1st VICE-PRES.

J. R. KILBOURNE, 2nd VICE PRES. & ASST. GEN'L. MANAGER.
F. W. HUBBARD, SECRETARY.

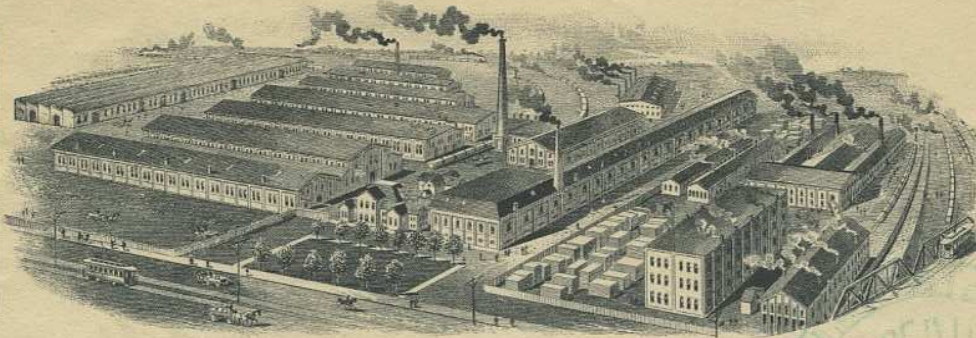
F. C. EATON, TREASURER.
JOS. D. POTTER, AUDITOR.

THE KILBOURNE & JACOBS MFG. CO.

INCORPORATED

WHEEL SCRAPERS,
DRAG SCRAPERS,
CONTRACTORS,
DUMP CARS AND CARTS,
GRADING PLOWS,
WHEELBARROWS
OF ALL KINDS.

STEEL
ORE AND MINE CARS,
AND TUBULAR
WHEELBARROWS,
SMALL CARS
OF EVERY KIND.



RAILROAD AND WAREHOUSE
TRUCKS,
BAGGAGE BARROWS,
SUGAR CANE CARS,
PLANTATION CARS,
NARROW GAUGE
RAILROAD CARS,
STEEL TROUGH
AND STEEL SHAPES
OF VARIOUS KINDS,
WROUGHT STEEL SINKS,
STEEL SHOP PANS
AND
STEEL BARRELS.

CABLE ADDRESS:
"KILBOURNE COLUMBUS"
CODES USED:
OUR CIPHER NO. 8,
A. B. C. CODE 4TH EDITION,
DIRECTORY CODE,
K-1 CODE,
WESTERN UNION TELEGRAPHIC CODE
LIEBER'S CODE.

LOCAL & LONG DISTANCE TELEPHONES
WITH PRIVATE BRANCH EXCHANGES

GENERAL OFFICES AT WORKS,
CORNER LINCOLN AND FOURTH STREETS.
COLUMBUS, OHIO.

NEW YORK CITY OFFICE,
42 BROAD STREET.
BRANCH OFFICES:
LONDON,
SYDNEY,
BUENOS AIRES,
SANTIAGO.
CONNECTIONS IN ALL PARTS OF THE WORLD.

Columbus, O., U.S.A.

Dec. 6th, 1911.

IN ANSWERING THIS LETTER
PLEASE REFER TO DEPT.

Traffic.

N. & W. Ry. Co.,
G. C. Van Zandt, Agt.,
Columbus, O.

Dear Sir:-

Please refer to our letter of Nov. 25th returning to you Pro 1120 copy of original expense bill for 30¢ overcharge on shipment from American Car & Fdry. Co., Huntington, W. Va.

Upon further investigation, we do not find any record of having paid this amount to you, and believe that the original expense bill instead of being paid, was referred back to you for investigation, in which case you would of course, not be obliged to make refund. If you find that we did pay this amount, kindly advise date of settlement in which same was included, so that we can locate the original expense bill and send same to the shippers, in order that they may secure the refund.

Yours truly,

JGY/RS.

THE KILBOURNE & JACOBS MFG. CO.

J. G. Young
Traffic Manager.